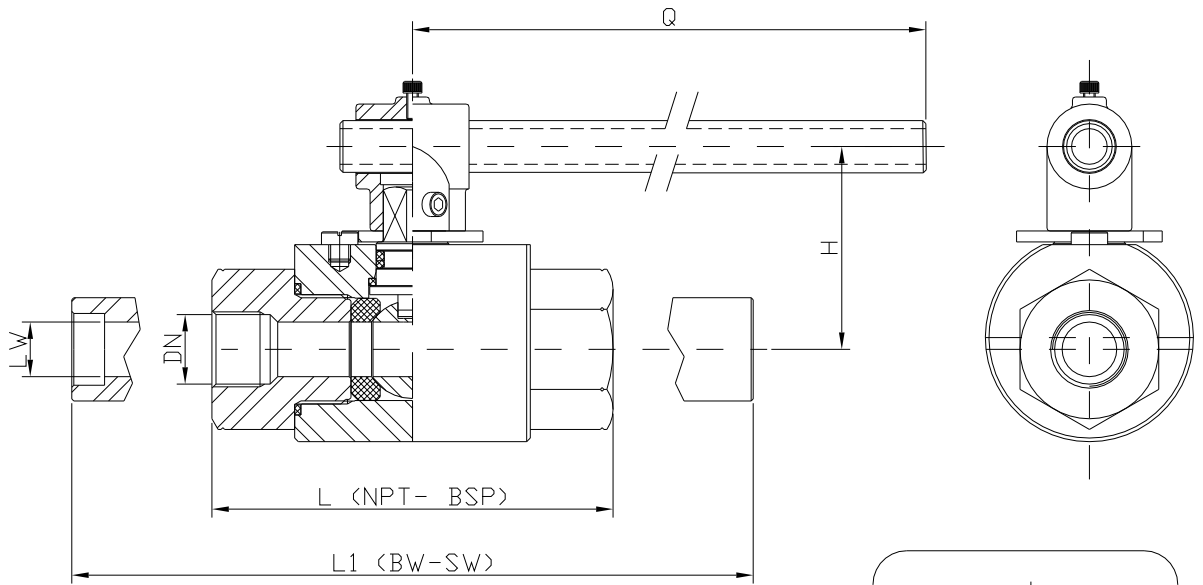


ST-830 / 831

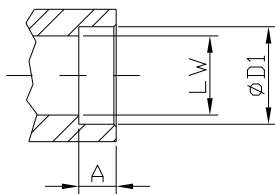
- ➡ VÁLVULA DE ESFERA - 2 VIAS - ALTA PRESSÃO
BSP - NPT - SW - BW
- ➡ ACIONADA POR ALAVANCA, REDUTOR MANUAL, ELÉTRICO OU
ATUADOR PNEUMÁTICO



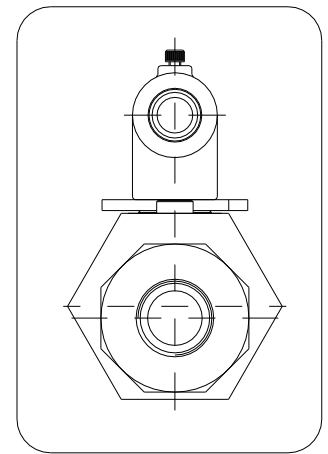
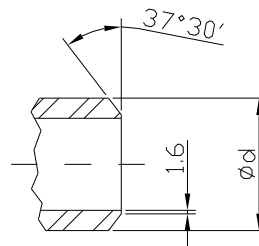
VÁLVULAS INDUSTRIAIS



DETALHE PARA EXTREMIDADE TIPO SOLDA DE ENCAIXE (SW)



DETALHE PARA EXTREMIDADE TIPO SOLDA DE TOPO (BW)



DETALHE PARA VÁLVULAS DN 1/4" e 3/8"

ST-830 – PASSAGEM PLENA

ST-831 – PASSAGEM REDUZIDA

ROSCA BSP CONFORME DIN 259
ROSCA NPT CONFORME ANSI-B 2.1

| DN | LW | L | H | Q |
|------|------|-------|-------|-------|
| 1/4" | 10.0 | 70.5 | 56.0 | 120.0 |
| 3/8" | 10.0 | 70.5 | 56.0 | 120.0 |
| 1/2" | 15.0 | 110.0 | 65.0 | 195.0 |
| 1" | 25.0 | 123.0 | 75.0 | 195.0 |
| 2" | 48.0 | 180.0 | 103.0 | 340.0 |

ROSCA BSP CONFORME DIN 259
ROSCA NPT CONFORME ANSI-B 2.1

| DN | LW | L | H | Q |
|--------|------|-------|------|-------|
| 3/4" | 15.0 | 115.0 | 62.0 | 195.0 |
| 1.1/4" | 25.0 | 141.0 | 82.0 | 195.0 |
| 1.1/2" | 25.0 | 155.0 | 82.0 | 195.0 |

SOLDA DE ENCAIXE (SW) CONFORME ANSI B 16.11
SOLDA DE TOPO (BW) CONFORME ANSI B 16.25

| DN | LW | D1 | L1 | A | ød | H | Q |
|------|------|------|-------|------|------|-------|-------|
| 3/8" | 10.0 | 17.5 | 230.0 | 9.6 | 17.2 | 56.0 | 120.0 |
| 1/2" | 15.0 | 21.7 | 230.0 | 9.6 | 21.4 | 65.0 | 195.0 |
| 1" | 25.0 | 33.8 | 250.0 | 12.7 | 33.4 | 75.0 | 195.0 |
| 2" | 48.0 | 61.1 | 344.0 | 15.8 | 61.1 | 103.0 | 340.0 |

SOLDA DE ENCAIXE (SW) CONFORME ANSI B 16.11
SOLDA DE TOPO (BW) CONFORME ANSI B 16.25

| DN | LW | D1 | L1 | A | ød | H | Q |
|--------|------|------|-------|------|------|-------|-------|
| 3/4" | 15.0 | 27.0 | 230.0 | 12.7 | 26.7 | 75.0 | 195.0 |
| 1.1/2" | 25.0 | 48.6 | 290.0 | 12.7 | 48.3 | 103.0 | 195.0 |